

( )

**Kim, Taekyung. 2013. A prosodic analysis of Korean in the preschool years.** *Studies in Phonetics, Phonology and Morphology* 19.3. 395-410. The present study aims to describe the prosodic characteristics of Korean in the process of first language acquisition. I analyzed the AP(accentual phrase) patterns and length, IP(intonation phrase) boundary patterns and position in utterances spoken by Korean children at 3-5 years of age. Children were asked to repeat sentences presented by the examiner. Each stimulus sentence was carefully articulated in the same prosody by one examiner. The result of this study can be summarized as follows: First, the length of APs in response to S3(the compound and complex sentence) increased by children's age. There were significant differences between 3 and 4 years of age, and between 4 and 5 years of age. Second, the AP patterns were similar to those produced by adults, but one difference was that there were phenomena that syllables were articulated separately without AP formation or tone accord in some cases. Third, the rate that the IP boundary was posited after the conjunctive endings was higher in older subjects than younger subjects. Fourth, the IP boundary contour tones(i.e., LH% or HL%) were rare occurrences and were not shown in 3 aged group. These results suggest that the ability to use prosodic unit as a means of indicating grammatical information continues to improve between the age of 3 and 5 years, and prosodic unit and patterns should be considered in evaluating children's language proficiency. (**Hanyang University**)

Keywords: prosody, accentual phrase, intonation phrase, language acquisition, child language, phonological development, language evaluation

# 1.

,  
.  
,  
,  
(Fundamental frequency: F0),  
(amplitude),  
가 (duration)  
(Ladefoged 1993).

가 . Pierrehumbert (1987), Silverman et al.  
(1992), Ladd (1996)  
Jun(1998) THLH<sup>1</sup>

---

<sup>1</sup> (L) T (H) ,

가 (accentual phrase),  
(intonation phrase)  
가 , 가  
.<sup>2</sup>

가 . Nazzi et al.  
(2000), Ramus et al. (1999) 5  
, Jusczyk et al. (1992) 가 9  
1;6  
(Bloom 1973),  
(Brown 1973)

(2004) 3  
2 , (2004)  
가 1  
가 ,  
가 가  
3 가  
3~5  
가  
가

---

<sup>2</sup> ,  
,  
<sup>3</sup> ‘ , ‘ ( )’  
12 16  
(Owen 2001).

4

2.

2.1

61

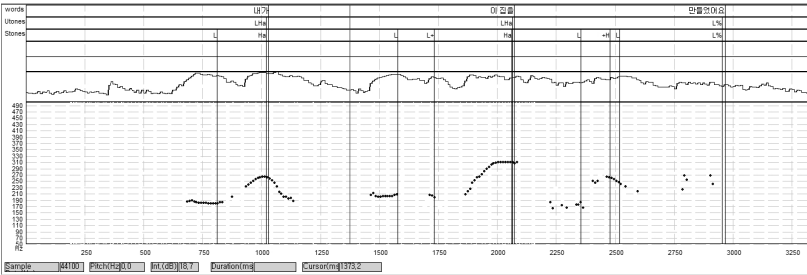
3~5 ( 3 20 , 4 20 , 5 21 )

5

( 6 ) , , ( 1 + ) 1 ~ 3 7

1.

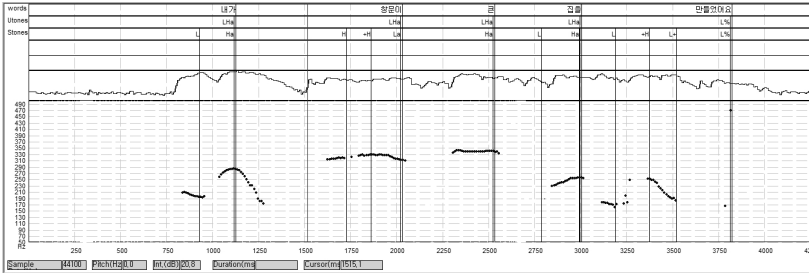
S1	가	
S2	가	
S3	가	



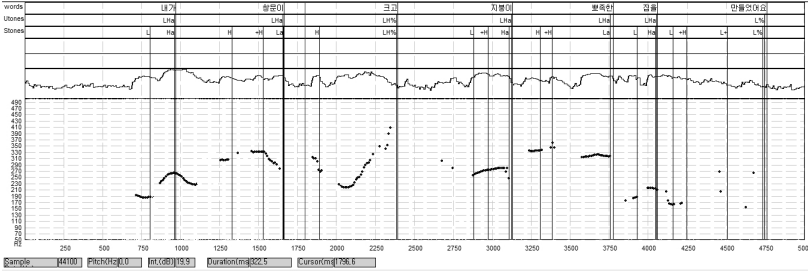
1. S1

4 Tager-Flusberg (1993), Tyack and  
Gottssleben (1986), Foster (1990)  
5 20  
6  
7 (Cook 1979) (2013)

가



2. S2



3. S3

1 ~ 3 가  
S1  
7, S2  
S3  
2.9(S3) 3.3(S1), 2.6(S2),  
9  
Sony PCM-M10 Shure PG81-LC  
44,000Hz, 16bit  
(wav)  
8 3 S3 가  
(pitch) (pause)  
9 가

183 가 173

2.2

1) , 2) , 3)

, 4)

(rising), (falling), (level)

( ) ( )

. O'Conner and Arnold (1973)

Pierrehumbert (1987) (L) (H)

. Pierrehumbert (1987)

Jun(1999) (IP, Intonation

Phrase) H%, L%, HL%, LH%, LHL%, HLH%, LHLH%,

HLHL%, LHLHL%( L (low), H (high) )

9가 ,

THLH

(AP, Accentual Phrase)

Jun (2000) K-ToBI <sup>10</sup>

SCICON PitchWorks (Version 6.0)

(F0)

<sup>11</sup>

가 ,

(ANOVA),

(Pearson) ( <sup>2</sup> )

SPSS(version 21)

<sup>10</sup> K-ToBI(Korean Tone and Break Indices Labelling Convention)

5 (phonological tone tier), (phonetic tone tier), (word tier),  
(miscellaneous tier) (break index tier),

a %

<sup>11</sup> 가 2 ,

400

.

3.

173

(2 ) 225 가 , 791

3.1

(AP) (IP) ,

.<sup>12</sup> ,

2 .

2. / ( : )

		N*				95%			
S1	3	19	2.84	.46	.11	2.62	3.07	2.33	4.00
	4	20	3.04	.41	.09	2.85	3.23	2.50	3.33
	5	21	3.06	.40	.09	2.87	3.24	2.50	3.33
		60	2.98	.43	.06	2.87	3.09	2.33	4.00
S2	3	18	2.65	.12	.03	2.59	2.71	2.50	3.00
	4	20	2.61	.06	.01	2.58	2.64	2.50	2.80
	5	21	2.74	.41	.09	2.56	2.93	2.60	4.33
		59	2.67	.26	.03	2.60	2.74	2.50	4.33
S3	3	13	2.57	.60	.17	2.21	2.93	1.50	3.33
	4	20	2.85	.29	.06	2.72	2.99	2.22	3.50
	5	21	3.21	.51	.11	2.98	3.44	2.75	5.00
		54	2.92	.52	.07	2.78	3.06	1.50	5.00

\*

2 ,

가

가

Scheffé

3

3. (one-way ANOVA)

		<i>df</i>		F	
S1	.557	2	.278	1.546	.222
S2	.191	2	.096	1.441	.245
S3	3.406	2	1.703	7.889	.001

3 가 (S3) , S1 S2 가

5 가 3 Scheffé , S3

(*p*<.05).

가 , 5 가 3

가 가

가

3~5

3.2

791

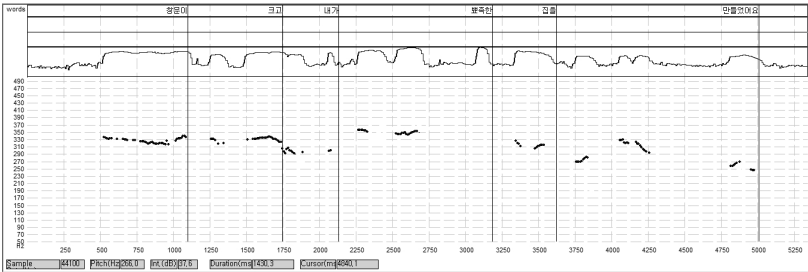
(225 ) 4

4. 13

	3	4	5	( )
L	2	1	0	3 (0.5%)
H	27	29	25	81 (14.3%)
LL	3	10	4	17 (3.0%)

LH	75	96	108	279 (49.3%)
HL	1	0	2	3 (0.5%)
HH	23	34	26	83 (14.7%)
LLH	4	13	17	34 (6.0%)
LHL	0	1	0	1 (0.2%)
LHH	3	2	1	6 (1.1%)
HLH	2	7	1	10 (1.8%)
HHL	8	16	20	44 (7.8%)
LHLH	0	0	1	1 (0.2%)
HHLL	0	1	1	2 (0.4%)
HHLH	0	0	2	2 (0.4%)
	148	210	208	566 (100%)

4  
. , LH 49.3% 가 ,  
HH H 14.7% 14.3%  
가 LHLL  
LHLH, HHLL, HHLH 1%  
, 4 가 (‘  
’) (‘ ’) . , 4  
.  
가 (  $\chi^2=33.581, df=26, p=0.146$ ).  
가  
(Jun and Oh 1996, Jun 1998 ),  
가  
. 4 가  
.



4. S3 3

가 , “ ”(LHLL)

가 , 가

14

가 41

7.2%

15

(32 )

(3 : 35

, 4 : 6 ).

3.3

(pause)

16

가

(Clifton et al. 2002, 1996, 1997 ).

가 171 (76%)

(14.4%) , 17 (7.6%)

225

37

5

14

F0

( 2007)

가 10Hz

15

가 , 가

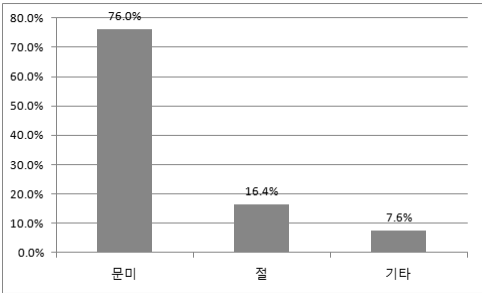
16

(2007)

( )

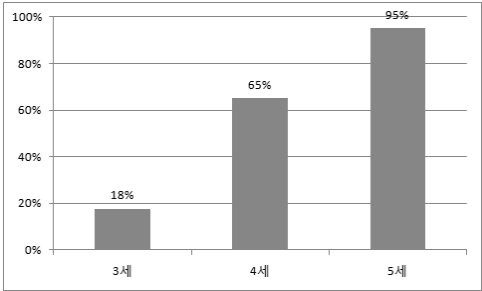
가

).



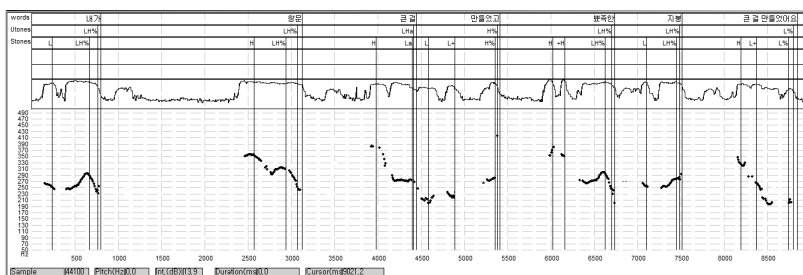
5.

가  
17.3 가 , 3 (“ ”)  
가 , 18%  
가  
가  
4 가  
13 (65%) , 5 21 가 20 (95%) 가  
가 ( 6 ).



6. 가

가 ( 7 ). 가



7. 가 (5 )

7 , 가 LH  
가 . , S3 가 6  
(" 가, , , ,  
.")

3.4

가  
L%, H%, HL%, LH%, LHL%, HLH%,  
HLHL%, LHLH% (Jun 1993, 1999).  
L% 가 , HL%, LH%  
가 H%, HL%, LH%

가, 3~5, L%, H%, LH%, HL%, 5

17 7

(2000) (H%)가 35% 가 ,  
(HL%) 32%, (L%) 16%, (LHL%) 10%, (LH%) 7%

	3	4	5	( )
L%	36	55	59	150 (66.7%)
H%	18	20	28	66 (29.3%)
LH%	0	4	4	8 (3.6%)
HL%	0	1	0	1 (0.4%)
	54	80	91	225 (100%)

가 . ,  
 .  
 ,  
 ( . 2~3  
 2004)  
 26  
가  
 3  
 , 3  
 3  
가  
 19  
가 ,  
가 .  
 , 5  
 (95%), 4 65%가  
 , 3 18%  
 3~5  
가  
 HL% ,  
가 L%, H%  
 (3 )  
가  
 ,  
 20

---

19 가  
20 가 (Fluharty 2000).  
가

- . 1997. :  
 . . . 2007. Momel  
 63, 85-100.  
 . 2004. .  
 115, 87-118.  
 . 2013. 가 , 64, 91-112.  
 . 1996.  
 . 18, 153-188.  
 . 2003.  
 . 2004. :  
 , 11.2, 151-164.  
 . 2007. 28,  
 67-87.  
 . 2000. ,  
 7.4, 219-234.  
 . 1999. 5.2,  
 109-129.  
 BLOOM, LOIS. 1973. *One Word at a Time*. The Hague: Mouton.  
 BROWN, ROGERS. 1973. *A First Language: The Early Stages*. Cambridge,  
 Massachusetts: Harvard University Press.  
 CLIFTON, CHARLES, KATY CARLSON and LYN FRAZIER. 2002. Informative  
 prosodic boundaries. *Language and Speech* 45, 87-114.

- COOK, WALTER A. 1979. *Case Grammar: Development of the Matrix Model*(1970-1978), Washington, DC: Georgetown University Press.
- FLUHARTY, NANCY. 2000. *Fluharty Preschool Speech and Language Screening Test* (2nd edition), Austin, Tex.: PRO-ED.
- FOSTER, SUSAN H. 1990. *The Communicative Competence of Young Children*. New York: Longman.
- JUN, SUN-AH. 1993. *The Phonetics and Phonology of Korean Prosody*. PhD Dissertation. Ohio State University.
- \_\_\_\_\_. 1998. The accentual phrase in the Korean prosodic hierarchy. *Phonology* 15.2, 189-226.
- \_\_\_\_\_. 2000. K-ToBI Labelling Conventions(version 3.1). *UCLA Working papers in Phonetics* 99, 149-173.
- JUN, SUN-AH and MIRA OH. 1996. A prosodic analysis of three types of Wh-phrases in Korean. *Language and Speech* 39.1, 37-61.
- JUSCZYK, PETER W., KATHY HIRSH-PASEK, DEBORAH G. KEMLER NELSON, LORI J. KENNEDY, AMENDA WOODWARD and JULIE PIWOZ. 1992. Perception of acoustic correlates of major phrasal units by young infants. *Cognitive Psychology* 24.2, 252-293.
- LADD, ROBERT. 1996. *Intonational Phonology*. Cambridge University Press.
- LADEFOGED, PETER. 1993. *A Course in Phonetics* (3rd edition). Orlando, FL: Harcourt Brace College Publishers.
- NAZZI, THIERRY, PETER W. JUSCZYK and ELIZABETH K. JOHNSON, 2000. Language discrimination by English-learning 5-month-olds: Effects of rhythm and familiarity. *Journal of Memory and Language* 43, 1-19.
- O'CONNER, DESMOND J. and FREDERICK G. ARNOLD. 1973. *Intonation of Colloquial English*, London: Longman.
- OWENS, ROBERT E. Jr. 2001. *Language Development: An Introduction*, Boston: Allyn & Bacon.
- PIERREHUMBERT, JANET B. 1987. *The Phonetics and Phonology of English Intonation*, Indiana: IULC Publications.
- RAMUS, FRANCK, MARINA NESPOR and JACQUES MEHLER. 1999. Correlates of linguistic rhythm in the speech signal. *Cognition*, 73, 265-292.
- SILVERMAN, KIM E. A., MARY E. BECKMAN, JOHN F. PITRELLI, MARI OSTENDORF, COLIN W. WIGHTMAN, PATTI PRICE, JANET B. PIERREHUMBERT and JULIA HIRSCHBERG. 1992. ToBI: a standard for labelling English prosody. *Proceedings of ICSLP*. Banff: Canada. 867-870.
- TAGER-FLUSBERG, HELEN, 1993. Putting words together: Morphology and syntax in the preschool years. In Jen B. Gleason (ed.). *The Development of Language*, 152-193. New York: Macmillan.
- TYACK, DOROTHY. L. and ROBERT H. GOTTSLEBEN. 1986. Acquisition of complex sentences. *Language, Speech and Hearing Services in Schools* 17, 160-174.

410

426-791

55

e-mail: kimtk@hanyang.ac.kr

received : October 11, 2013

revised : November 28, 2013

accepted : December 7, 2013